

# SnapSkru® Self-Drilling Drywall Anchors

**TOGGLER®**  
HIGH-PERFORMANCE ANCHORS™

## Description

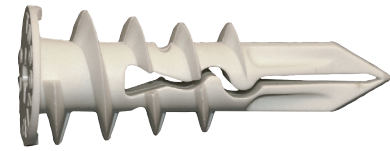
The TOGGLER® SnapSkru self-drilling drywall anchor needs no drill and installs as quickly and easily as an ordinary self-drilling drywall “auger” anchor, but its unique “Snap Lock” feature provides the positive behind-the-wall locking and holding power of a toggle bolt. During installation the SnapSkru anchor keeps the wall material in compression, reinforcing and locking the anchor in the wall, allowing it to hold more than other auger anchors.

## Key Features & Benefits

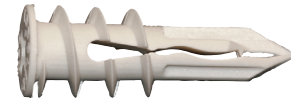
- ▶ Unique locking action **resists vibration and shock**
- ▶ **Holds securely** in walls & ceilings
- ▶ Built-in “Positive Stop” **resists overdrilling**
- ▶ Audible “**pop**” indicates correct installation
- ▶ Does **not destroy** the wall – can remove screw & item leaving anchor in wall for reuse
- ▶ Works with **largest range** of screw sizes:
  - **SPM MINI** = #6, #8 (**#6** preferred)
  - **SP Regular** = #6, #8, #10 (**#8** preferred)
- ▶ **Strongest holding** of all self-drilling drywall anchors
- ▶ Fast & easy to install – **no drill** needed

## Applications

- ▶ Thermostats
- ▶ Shelving and Ledges
- ▶ Picture Frames and Art Objects
- ▶ Curtain Rods
- ▶ Cabinets
- ▶ Wall Lighting Fixtures and Sconces
- ▶ HVAC Grills
- ▶ Towel Bars and Bathroom Accessories
- ▶ Mirrors
- ▶ First Aid Kits
- ▶ Fire Extinguishers
- ▶ Smoke Detectors
- ▶ Speakers and AV Systems
- ▶ Motion Detectors and Alarms
- ▶ Telecommunication Equipment
- ▶ Bulletin and Chalk Boards
- ▶ Closet Organizers
- ▶ Coat Racks
- ▶ Clocks
- ▶ Signs



SP® Regular



SPM™ MINI



## Specifications, Listings and Approvals

### Materials:

Injection-molded, glass-filled nylon (proprietary thermoplastic alloy)

### Screw Specification:

Sheet Metal Screw (SMS)

### Screw Size Range, Diameter:

**Regular:** #6, #7, **#8** (preferred), #10;

**MINI:** **#6** (preferred), #7, #8

### Minimum Screw Length:

**Regular:** 1-1/4" + thickness of item being anchored

**MINI:** 1" + thickness of item being anchored

### Grip Range, Drywall Thickness:

3/8" - 5/8"

**\*Tip:** The anchor can be used in double thickness drywall (1-1/4") — drill pilot hole first

### Specs:

– No MSDS required

\* Pilot hole diameter size listed on page 3 for SP and page 4 for SPM

## Installation Information

### Instructions

1. Press tip of SnapSkru anchor into drywall using #2 Phillips screwdriver or screw gun. Drive anchor clockwise into drywall until anchor stops flush with the outer wall surface.

**TIP:** To keep anchor in precise position during installation (critical for aligning several anchors), push tip of screwdriver into drywall to mark insertion point.

2. Place item over anchor and insert any fully-threaded screw.

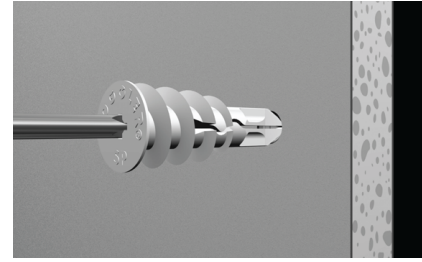
For SPM™ MINI anchor: #6 through #8 (**#6** preferred).

[Ø3.5 - 4mm, **3.5mm** preferred]

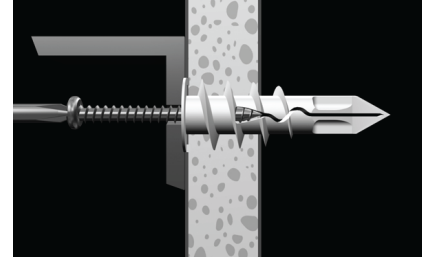
For SP® Regular anchor: #6 through #10 (**#8** preferred).

[Ø3.5 -4.5mm, **4mm** preferred]

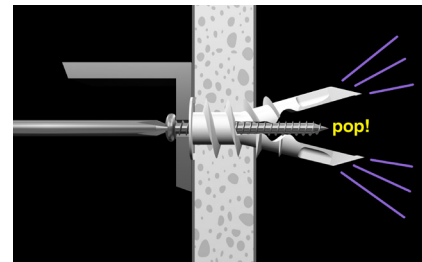
3. Tighten screw flush with item. The screw pops open the anchor, locking it on the wall and holding the gypsum board in compression. This reinforces the wall, increasing its holding power significantly.



1

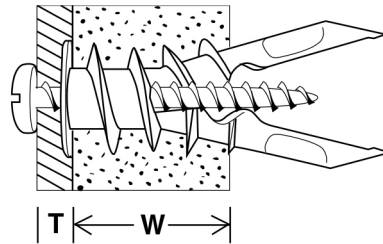
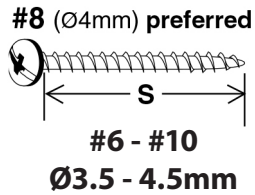
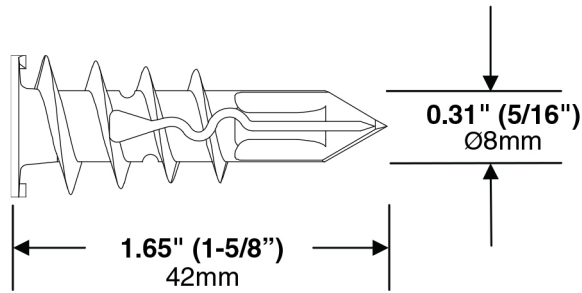
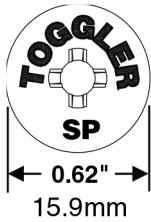


2



3

## Installation and Performance Data – SP® Regular



**(W)** Wall thickness  
Min. 3/8" (10mm)  
Max. 5/8" (16mm)  
*Tip:* The anchor can be used in double thickness drywall (1-1/4") — drill a 1/4" pilot hole first.

**(T)** Item thickness

**(S)** Screw length =  $T + 1\ 1/4"$  (32mm)

*Item thickness (T) must be considered when selecting screw length (S).*

### SP Specifications

System of Measurement	Head Dia.	Screw Sizes	Perferred Screw	Min. Screw Length (S)	Wall Thickness (W)	*Min. Clearance Behind Wall
UNC	0.6"	#6, #8, #10	#8	1-1/4" + item (T)	3/8"-5/8"	1-5/8" minus (W)
Metric	16mm	Ø3.5, 4, 4.5mm	Ø4mm	32mm + item (T)	10-16mm	42mm minus (W)

**Notes:**

\*Additional clearance may be needed for extra-long screws

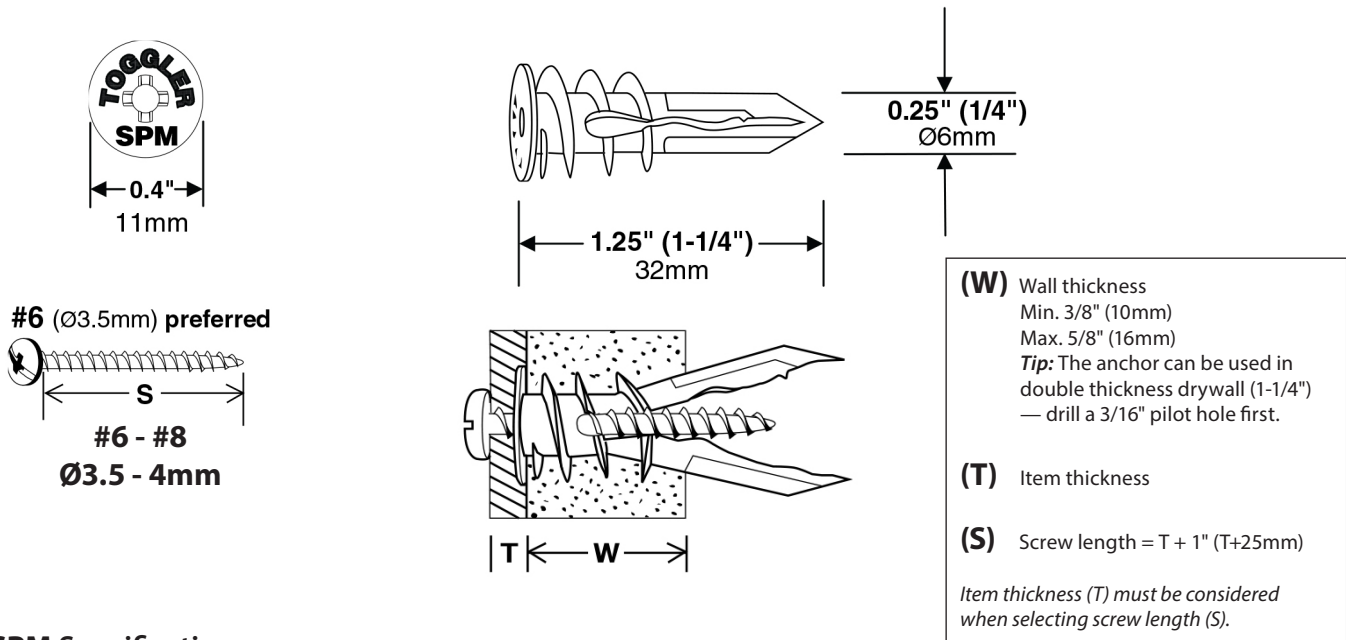
### SP Ultimate Load (lbs.)

Tested Screw Size	3/8" Drywall		1/2" Drywall		5/8" Drywall	
	Tension	Shear	Tension	Shear	Tension	Shear
#8 x 1-1/2"	57	108	79	149	135	178

**Notes:**

- Industry safety standards recommend using only 1/4 of ultimate tensile and shear values as the maximum load per anchor.
- Ultimate tensile and shear values for a SnapSku anchor vary directly with the strength and thickness of the wall material, the screw size, and the extent of the screw engagement.
- The above table of ultimate tensile and shear values is to be used as a guide only. Due to variability and condition of wall materials and construction methods, TOGGLER Anchor System cannot guarantee that you will achieve the same results. The age, condition, and capacity of the substrate must be considered.

## Installation and Performance Data – SPM™ MINI



### SPM Specifications

System of Measurement	Head Dia.	Screw Sizes	Perferred Screw	Min. Screw Length (S)	Wall Thickness (W)	*Min. Clearance Behind Wall
UNC	0.4"	#6, #8	#6	1" + item (T)	3/8"-5/8"	1-1/8" minus (W)
Metric	11mm	Ø3.5, 4mm	Ø3.5mm	25mm + item (T)	10-16mm	29mm minus (W)

**Notes:**

\*Additional clearance may be needed for extra-long screws

### SPM Ultimate Load (lbs.)

Tested Screw Size	3/8" Drywall		1/2" Drywall		5/8" Drywall	
	Tension	Shear	Tension	Shear	Tension	Shear
#6 x 1-1/4"	57	105	65	131	95	175

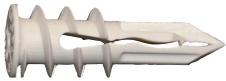
**Notes:**

- Industry safety standards recommend using only 1/4 of ultimate tensile and shear values as the maximum load per anchor.
- Ultimate tensile and shear values for a SnapSku anchor vary directly with the strength and thickness of the wall material, the screw size, and the extent of the screw engagement.
- The above table of ultimate tensile and shear values is to be used as a guide only. Due to variability and condition of wall materials and construction methods, TOGGLER Anchor System cannot guarantee that you will achieve the same results. The age, condition, and capacity of the substrate must be considered.

Order Information



SnapSkru SP® Regular Anchors				
Catalog No.	Included Screw Size In Bag/Box	Box/Bag (pcs.)	Inner Carton (pcs.)	Master Carton (pcs.)
30010	100 #8 x 1-1/2" Combo Screws	100	1000	3000
30011	No Screws	100	1000	3000
30012	50 #8 x 1-1/2" Combo Screws	50	500	2500
50125	20 #8 x 1-1/2" Combo Screws	20	200	2000
50100	4 #8 x 1-1/2" Combo Screws	4	40	800



SnapSkru MINI Anchors				
Catalog No.	Included Screw Size In Bag/Box	Box/Bag (pcs.)	Inner Carton (pcs.)	Master Carton (pcs.)
30030	100 #6 x 1-1/4" Combo Screws	100	1000	5000
30031	No Screws	100	1000	5000
30032	50 #6 x 1-1/4" Combo Screws	50	500	2500
50175	25 #6 x 1-1/4" Combo Screws	25	250	2500
50150	6 #6 x 1-1/4" Combo Screws	6	60	1200

For more information, please contact:



Divisions of Mechanical Plastics Corp.

110 Richards Avenue • Norwalk, CT 06854

Phone: 203-857-2200

Fax: 203-857-2201 • E-mail: sales@wej-it.com

www.toggler.com • www.wej-it.com

TOGGLER® and typeface, Wej-It®, High-Performance Anchors®, SPM™ and SP® are worldwide trademarks of Mechanical Plastics Corp. U.S. Patent nos. 7,144, 212 and 7,320,569 and foreign counterparts thereof. Other patents pending. ©2015 Mechanical Plastics Corp. REV. 8/15